

← VILLAGE SITE PLAN

PAN AMERICAN VILLAGE

The revitalization of the Village site is already underway and will proceed regardless of the outcome of the Pan American Games bid.

A NEW VILLAGE – A NEW NEIGHBOURHOOD

The site of the Pan American Village is uniquely positioned to accommodate both the needs of the Toronto 2015 Pan American Games and the vision for a powerful post-Games legacy. Located in Toronto's waterfront district – just east of downtown, within 25 minutes of most Games venues and less than 25 minutes from the airport – the Pan American Village will be one of the jewels of the Toronto 2015 Games legacy.

Over the past several years, the site of the Village has been the subject of extensive visioning and planning work, the result of which is an award-winning plan for waterfront redevelopment that is flexible, sustainable and integrated into the fabric of the city. It will result in a vibrant new showcase neighbourhood that will knit into the surrounding urban communities and become a model for urban revitalization and sustainability.

Construction of supporting infrastructure and the acquisition of planning approvals are already well underway, ensuring that the Toronto 2015 Pan American Village will meet the strict timelines demanded by the Games. The 80-acre provincially-owned site will accommodate a flexible mix of housing, office space, retail/restaurants and staging areas, all just a few minutes' walk to Toronto's picturesque waterfront.

The Pan American Village, which will incorporate an 18-acre park, will be immediately adjacent to the Don River and the landscaped boulevard of Front Street. The residences will incorporate a mix of housing types from townhouses to mid-rise buildings and towers. At the heart of the Pan American Village, a wide boulevard/plaza will function as the natural gathering place for events and social activity.

THE VISION FOR THE PAN AMERICAN VILLAGE

The vision for the Toronto 2015 Pan American Village will put a newly-constructed, self-contained, high-capacity Village at the heart of the Games. It will provide a quiet, safe and secure Games-time home of Olympic standard for up to 8,500 athletes and team officials. It will incorporate a full range of conveniences and amenities while also offering easy transportation to Games venues and close proximity to the attractions of the adjacent downtown and waterfront. It will be a safe and welcoming environment, secured by the latest technology and supported by a cohort of well-trained staff focused on meeting the needs of the residents.

The Toronto 2015 Pan American Village will be an exceptional fit for the requirements of the Games and also a wonderful legacy for the City of Toronto.

The Pan American Village will feature buildings that will meet LEED (Leadership in Energy and Environmental Design). The overall Village design will also be an excellent candidate for participation in the LEED ND (Neighbourhood Design) program which looks beyond energy-efficient buildings to community-scale characteristics such as development density and proximity, walkable streets, affordability, community involvement and diverse local uses.

← VIEW OF THE VILLAGE FROM THE PARK

YOUR MOMENT IS HERE | TORONTO 2015 | 49



SECTION 7 | PAN AMERICAN VILLAGE

TORONTO 2015 PAN AMERICAN VILLAGE HIGHLIGHTS

New Village Development	Able to offer a high standard of hospitality, service and technology
Meets or Exceeds IOC Technical Requirements	Examples include air conditioning, single occupancy living quarters rooms at 9m ² and double occupancy at 12m ² , up to 8,500 beds and spacious NOC offices
Secure Park within Village Perimeter	Large 18-acre park within the secured Village perimeter, including running and cycling trails
New Training and Recreation Facilities	400m athletics track and field for training, a 50m pool, and a recreation/fitness centre all within the Village site
Large and Efficient Transport Mall	Central depot to serve as an efficient entry/exit point for athletes and team officials - will also be the hub for internal Village transportation
Comprehensive Services	24-hour services throughout the Village, including but not limited to transportation, dining, sport and recreation
Compact Village Layout	All core services are within 5 minute walk of all residence buildings
Central Location	Easy access to major transportation arteries and close proximity to Toronto's attractions and Games venues
Sustainable Green Technology	LEED certified buildings and neighbourhood featuring a district energy system for efficient heating and cooling
Significant Post-Games Legacy	Housing development and new city neighbourhood on a previously underutilized site, along with new sport facilities for community use

ATHLETE-CENTRED

Toronto 2015 will take an athlete-centred approach to planning and operating the Pan American Village. This will translate into designs, policies and practices that are specifically required to respect the traditions, cultures, abilities, languages and customs of all residents. The Pan American Village will also provide a secure, comfortable and highly-functional environment that allows the athletes to focus on enjoying their Games experience and competing to the best of their abilities.

DATES OF OPERATION

The Pan American Village will open at least 10 days before the first day of the Games and close no earlier than 3 days after the Closing Ceremony, in accordance with PASO regulations.

The minimum operational dates of the Pan American Village will be: Tuesday, June 30, 2015 to Wednesday, July 29, 2015.

VILLAGE COMPONENTS

Welcome Centre / Accreditation Centre

The Welcome and Accreditation Centre will greet the arriving teams. This area will offer a selection of hospitality services (including baggage and equipment handling) and present a distinctive décor representing both Canadian culture and the history of the Pan American Games.

The high-volume accreditation desk will process the arriving teams efficiently to ensure that all residents receive their accreditation in a timely manner. Team arrival processing will take place in the same location.

Residential Zone

The Residential Zone of the Pan American Village is a highly restricted area with accommodations and services for up to 8,500 residents. The Residential Zone will also provide spacious and furnished offices for NOCs, large main dining facilities with diverse and healthy menus, casual dining areas and a Polyclinic offering the highest standard of care. There will be spaces for worship and quiet contemplation, social and leisure areas, along with sport and recreational areas for on-site training and fitness needs. More specifically, the Residential Zone will include:

- Resident accommodation in secure rooms
- Residents' Dining Hall (24-hour hot meal service, spacious seating area, diverse menu with ingredients identified) standards



↑ RESIDENTIAL ZONE

- Casual Dining Hall (alternative menu options offered)
- NOC office and meeting space (includes work space, medical room)
- NOC secure storage space
- NOC Services Centre
- Bookable meeting rooms
- Polyclinic (emergency care, outpatient area, rehabilitation area and equipment, pharmacy, medical imaging, laboratory services)
- Village Communications Centre
- Sports Information Centre
- Chefs de Mission Hall
- Sports Viewing Room
- Entertainment
- Resident Services Desk
- Religious Centre
- Security Command Centre
- Laundry facilities (multiple locations)

The Residential Zone will also offer the residents secure access to a selection of training and recreation facilities. A recreation centre, 50m pool, 400m track, throwing and jumping area, basketball courts and a football pitch will all be part of the zone. These features will be connected to the 18-acre Don River Park which will also be part of the Residential Zone. The park will offer running and cycling trails that wind through an urban meadow with views of the Don River, Lake Ontario and downtown Toronto.

The Residential Zone, in fact the entire Pan American Village, will be equipped for wireless access for personal computers and handheld devices.

ENHANCED RATE CARD

Toronto 2015 will provide PASO and all NOC's with an "enhanced" rate card system. The rate cards will ensure that members of the PASO family have a convenient system for obtaining the services and resources they require in Toronto. The rates will be negotiated in advance to ensure the best prices possible.

International Zone

The International Zone, which is restricted to residents except between 9:00 am and 9:00 pm when guests may obtain passes, is the heart of the Pan American Village and is the primary place where athletes, officials, guests and media can interact. It will be the meeting place for residents and guests, the location of a retail/commercial area and will provide spaces suitable for media interviews. This zone will incorporate the media sub-centre, guest dining facilities, banking facilities, a general store, a retail outlet, recreation and leisure facilities and a telecommunications facility. Many of the services in this zone will be staffed 24 hours a day. More specifically, these services include:

- Outdoor / Tented Stage (site for the Team Welcome Ceremonies)
- General Store (includes pharmacy, florist, dry cleaner, post office)
- Bank
- Communications Café (internet access, telephones)
- Hair Salon
- Café
- Travel Agent
- Ticket Office
- Information Desk
- First Aid Station



Toronto 2015 will also establish a Pan American Games Pavilion that celebrates the best of sport, culture, innovation and social leadership from the Caribbean and the Americas.

Operations Zone

The Operations Zone will be the centre of support for the Pan American Village. This zone will feature a transportation mall, site management offices, storage, materials transfer areas, waste management areas, laundry and other back-of-house areas.

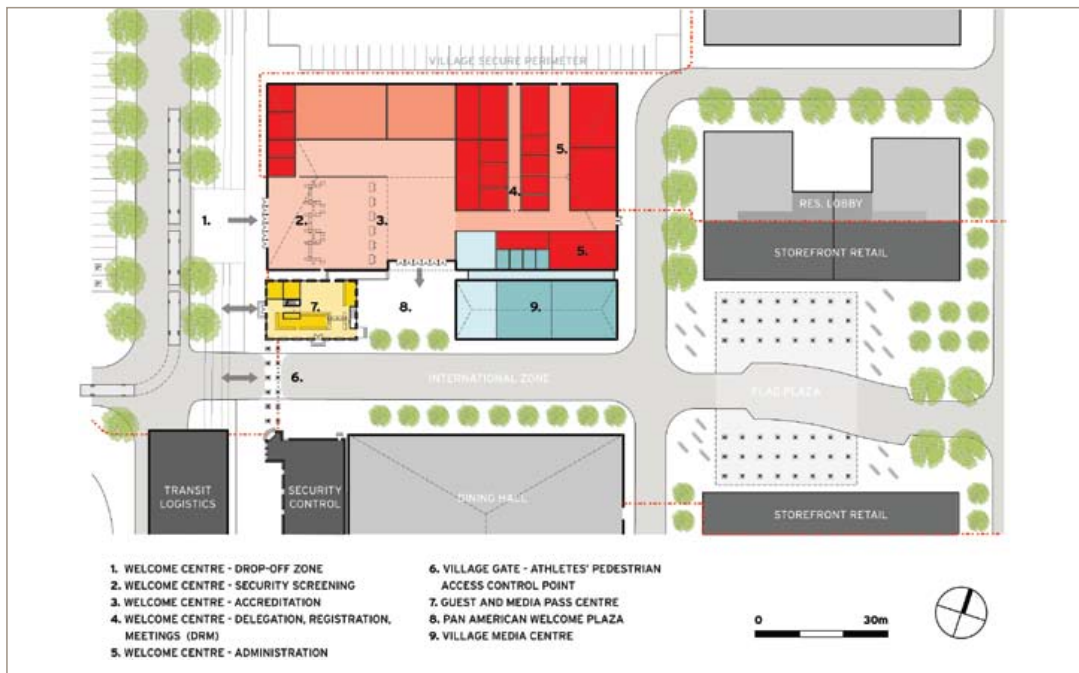
- Welcome Centre / Accreditation Centre (access control point)
- Visitor Centre (access control point)
- Village Media Centre
- Transport Mall
- Dedicated Vehicle Parking with reserved parking for NOC officials

- Village Vehicle Pool (motor pool, bicycle pool, cart pool)
- Facilities Services Centre
- Village Management Office
- Staff Centre
- Housekeeping/Laundry

The Pan American Village General Manager (GM) will be an experienced and senior member of the Toronto 2015 staff. With this in mind, Toronto 2015 will draw on Canada’s international games hosting experience, including the Winnipeg 1999 Pan American Games and Vancouver 2010 Olympic Winter Games, to ensure that the GM has direct experience in managing a village in a multi-sport games environment.

Transport Mall

The transport mall will be the hub of all dedicated transportation to, from and within the Pan American Village. Like the entire Village, the mall will feature easy-to-follow signage, in Spanish, English, French and Portuguese, and frequently-scheduled bus and shuttle transportation to ensure Village residents are able to travel among the Games venues in a timely and carefree fashion.



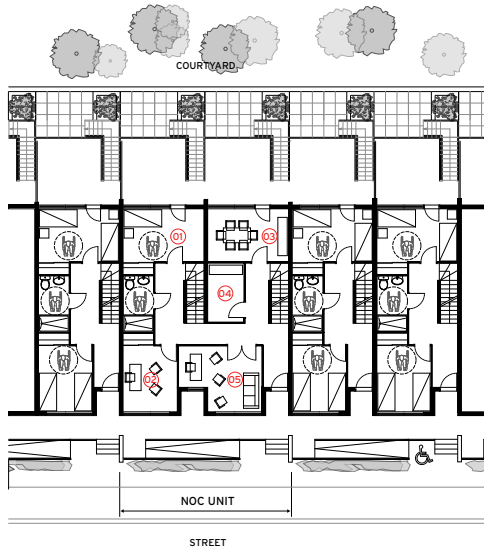
↑ VILLAGE SITE PLAN AND WELCOME CENTRE

**BUILDING TYPE A:
NOC TOWNHOUSE UNIT TYPICAL PLAN**

0 5m

DELEGATION UNIT
TOTAL AREA 96.29 m²

ROOM No.		SURFACE AREA
01	C. de M. QUARTERS	13.25 m ²
02	C. de M. OFFICE	1200 m ²
03	MEETING ROOM	12.15 m ²
04	MASSAGE ROOM	6.05 m ²
05	TEAM OFFICE	13.50 m ²

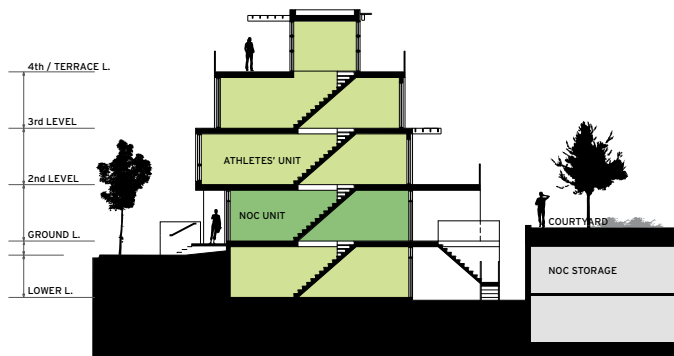
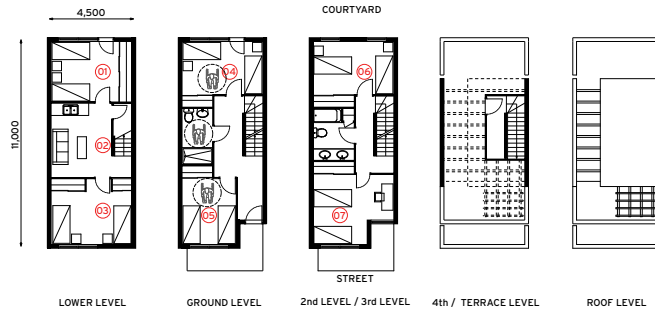


**BUILDING TYPE A:
ATHLETES' TOWNHOUSE UNIT
TYPICAL PLAN + SECTION**

0 5m

12 PERSON UNIT
TOTAL AREA 196.00 m²

ROOM No.		SURFACE AREA
01	BEDROOM	13.85 m ²
02	LIVING	13.65 m ²
03	BEDROOM	15.05 m ²
04	BEDROOM	12.15 m ²
05	BEDROOM	12.05 m ²
06	BEDROOM	13.60 m ²
07	BEDROOM	15.70 m ²



↑ BUILDING TYPE A



→ VILLAGE AERIAL VIEW

BUILDING TYPE B: NOC APARTMENT TYPICAL PLAN

STREET

8 BED UNIT

NOC APARTMENT

PERSONAL UNIT	TOTAL AREA	SURFACE AREA
8 PERSON UNIT	2403.5M	
ROOM No.		
01	CLOSET OFFICE	11.66
02	DOCTOR'S QUARTERS	12.00
03	MEETING ROOM	21.16
04	RECEPTION ROOM	11.35
05	RECEPTION ROOM	11.35
06	RECEPTION ROOM	11.35
07	RECEPTION ROOM	11.35
08	RECEPTION ROOM	11.35
09	RECEPTION ROOM	11.35
10	RECEPTION ROOM	11.35
11	RECEPTION ROOM	11.35

BUILDING TYPE B:
ATHLETES' APARTMENT
TYPICAL PLAN + SECTION

8 BED UNIT

6 BED UNIT

8 BED UNIT

PERSONAL UNIT	TOTAL AREA	SURFACE AREA
8 PERSON UNIT	1291.0 SM	
ROOM No.		
01	RECEPTION	11.25
02	RECEPTION	12.00
03	RECEPTION	12.00
04	RECEPTION	12.00
05	RECEPTION	12.00
06	RECEPTION	12.00
07	RECEPTION	12.00
08	RECEPTION	12.00
09	RECEPTION	12.00
10	RECEPTION	12.00
11	RECEPTION	12.00

PERSONAL UNIT	TOTAL AREA	SURFACE AREA
4 PERSON UNIT	1041.0 SM	
ROOM No.		
01	RECEPTION	14.15
02	RECEPTION	14.15
03	RECEPTION	14.15
04	RECEPTION	14.15
05	RECEPTION	14.15
06	RECEPTION	14.15
07	RECEPTION	14.15
08	RECEPTION	14.15
09	RECEPTION	14.15
10	RECEPTION	14.15
11	RECEPTION	14.15

PERSONAL UNIT	TOTAL AREA	SURFACE AREA
6 PERSON UNIT	1646.9 SM	
ROOM No.		
01	RECEPTION	14.60
02	RECEPTION	13.25
03	RECEPTION	12.00
04	RECEPTION	12.00
05	RECEPTION	12.00
06	RECEPTION	12.00
07	RECEPTION	12.00
08	RECEPTION	12.00
09	RECEPTION	12.00
10	RECEPTION	12.00
11	RECEPTION	12.00

ROOF

MEZZANINE

6th LEVEL

5th LEVEL

4th LEVEL

3rd LEVEL

2nd LEVEL

1st LEVEL

GROUND FL.

LOWER FL.

BUILDING TYPE B

SECTION 7 | PAN AMERICAN VILLAGE

BUILDING TYPE C: ATHLETES' GARDEN APARTMENTS TYPICAL PLAN + SECTION

8 BED UNIT

6 BED UNIT

8 BED UNIT

4 BED UNIT

PERSONAL UNIT	TOTAL AREA	SURFACE AREA
8 PERSON UNIT	86.50 m ²	
ROOM No.		
01	RECEPTION	13.15
02	RECEPTION	12.60

PERSONAL UNIT	TOTAL AREA	SURFACE AREA
6 PERSON UNIT	69.70 m ²	
ROOM No.		
01	RECEPTION	12.15
02	RECEPTION	15.80

PERSONAL UNIT	TOTAL AREA	SURFACE AREA
4 PERSON UNIT	44.25 m ²	
ROOM No.		
01	RECEPTION	12.15
02	RECEPTION	6.50

10th / TERRACE L.

9th LEVEL

8th LEVEL

7th LEVEL

6th LEVEL

5th LEVEL

4th LEVEL

3rd LEVEL

2nd LEVEL

1st LEVEL

GROUND FL.

LOWER FL.

BUILDING TYPE C





↑ INTERNATIONAL ZONE

Transfers between the Pan American Village and the Games venues will be quick, with multiple routing options, each capitalizing on the convenience of dedicated Pan American lanes for road transportation. The majority of Games venues will be no more than 25 minutes from the Pan American Village.

THE VILLAGE LEGACY

The Pan American Village will create a new community on Toronto's waterfront, a community that is economically, socially and environmentally sustainable. It will address a number of public policy objectives, including the reduction of urban sprawl, creation of new affordable housing and community sports facilities, enhanced access to public transit and reduction of the environmental impact of development.

VILLAGE ACCESS PLAN

Transportation will be available 24 hours a day on quiet, clean and energy-efficient shuttles traveling throughout the Village. Transportation will also be available to and from sport venues, the locations of Games cultural activities and key locations throughout Toronto. Numerous pedestrian pathways and bicycle paths will connect areas within the Pan American Village.

While access into the Pan American Village will be strictly controlled through a limited number

of access points, the location of the Pan American Village itself is accessible via a number of transportation options including local roads (which will feature dedicated Pan American lanes beginning at the entrance/exit of the Village), highways, express trains and public transit.

SECURITY

The site of the Pan American Village will be a significant asset in securing the Village because the site can be effectively secured for the Games while maintaining a spacious and open feel for the athletes. Access routes surrounding the Village can be controlled or closed during the Games with minimal disruption to local communities. The Don River to the east and the rail corridor to the south create a natural perimeter that can be effectively secured. This will simplify the process of controlling access to the Pan American Village during the Games.

Under the leadership of the Ontario Provincial Police (OPP), the policing agency that will provide central control to all Games security measures, the Pan American Village will also utilize state-of-the-art security technology to create a safe environment for all residents and visitors.

VILLAGE CULTURAL AND RECREATIONAL PROGRAMS

Beginning with the Welcome Ceremony to mark each team's arrival at the Village, the Pan American Village will be the home of, and the starting point for, a wide range of cultural and recreational experiences. Residents will have the option of spending time in relaxing, lounge-like social settings or taking part in the nightly entertainment planned specifically for the residents of the Village. Athletes will also have dedicated transportation to, and seating at, the nightly celebrations scheduled for various locations throughout the city. Beyond the Games-specific entertainment options, athletes and their families will have access, through the Village Ticket Office, to a diverse range of cultural activities including the attractions of downtown Toronto and trips to legendary Niagara Falls where Toronto 2015 will have a Pan American-specific welcome centre to arrange guides, tours and tickets for members of the PASO family.

DESIGN EXCELLENCE

The Pan American Village will not simply be a routine collection of average buildings. The Village will feature the type of excellence in design that turns a place to stay into a home-away-from-home. This includes a fully accessible and barrier-free environment for Village residents.

A panel of Canada's leading architects, landscape designers, engineers and academics has provided advice and guidance in selecting

SECURE INFRASTRUCTURE BUDGET

Funding for all parks and municipal infrastructure required as part of the design of the Pan American Village is already in place as part of a broader \$1.5 billion commitment that supports projects across Toronto's entire waterfront. This funding comes from all three levels of government - federal, provincial and municipal.

and directing the designers involved in planning the overall waterfront development project of which the Pan American Village is an important element. This design review panel vets all buildings, parks and public realm projects to be constructed on the waterfront.

These efforts have already been recognized with awards such as the 2007 Toronto Urban Design Award and the 2008 Royal Architectural Institute of Canada's Sustainable Development Award.

SUSTAINABLE DESIGN

All buildings in the Pan American Village will be built to achieve LEED (Leadership in Energy and Environmental Design) Gold certification, and will rely on a district heating and cooling system to ensure efficient energy delivery. The design of the Pan American Village will make the project an excellent candidate for participation in the US Green Building Council LEED ND (Neighbourhood Design) program which takes community-scale characteristics such as development density and proximity, walkable streets, affordability, community involvement and diverse local uses into account.

CONSTRUCTION

The extensive work completed to date on the Pan American Village site, including obtaining planning approvals, infrastructure construction and public realm design, helps ensure that the Pan American Village will be ready for the Games. Operational planning and infrastructure construction are already progressing, thus enhancing Village construction readiness.



↑ RECREATION CENTRE - RESIDENTIAL ZONE



↑ INTERNATIONAL ZONE

FINANCING AND SCHEDULE

The internationally recognized Toronto waterfront planned community has an estimated investment valued at approximately \$1 billion (Cdn).

The Pan American Village will be located in this remarkable and visionary development. After the games, the Village is expected to become a new community of high quality affordable housing and the prospect of market units as planned for the West Don Lands.

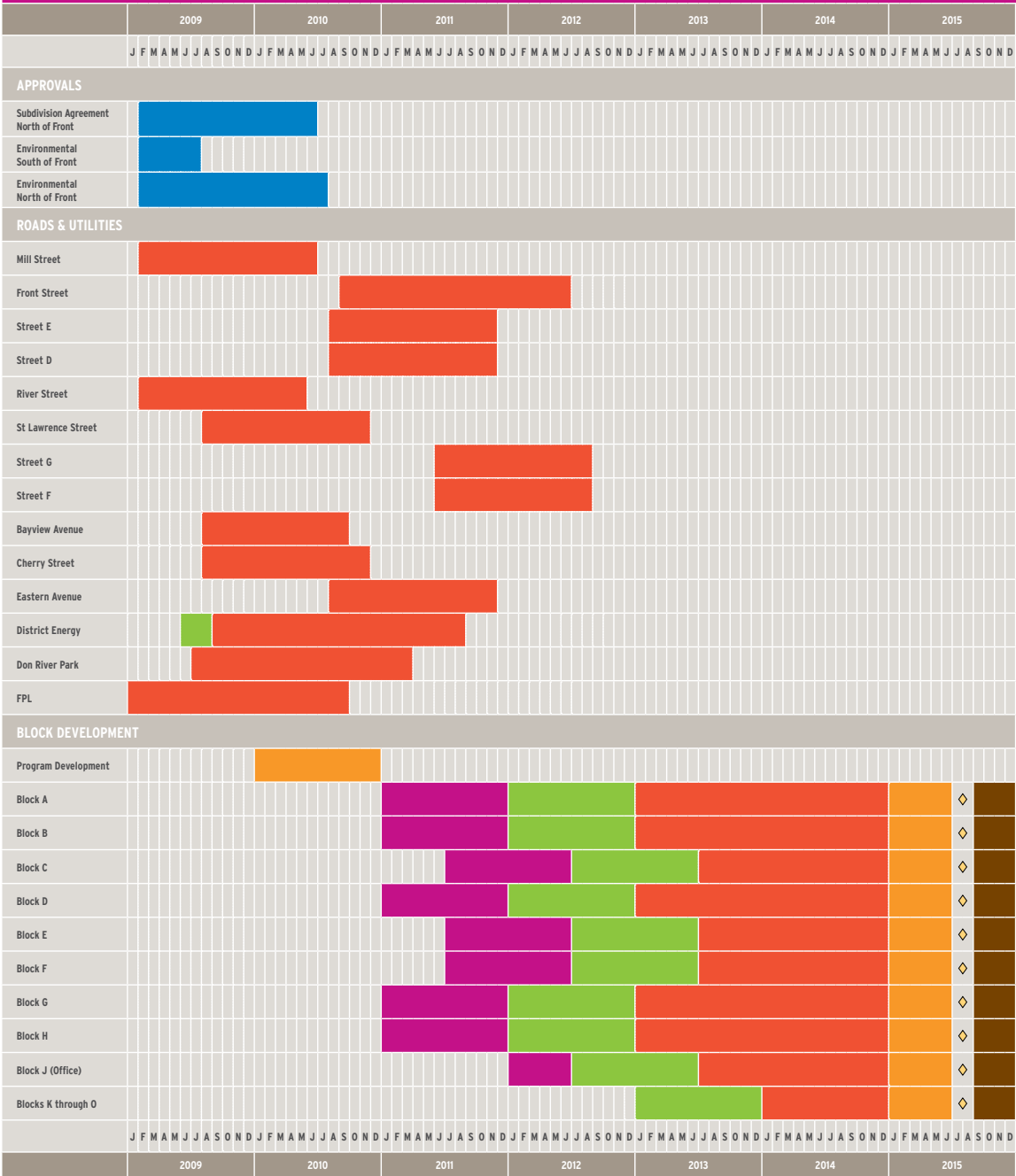
The West Don Lands is a publicly-led development that will proceed regardless of whether Toronto is selected as the host city for the 2015 Pan American Games. The proposed site of the Village – owned by the Province of Ontario – represents a prime development opportunity along Toronto's waterfront.

The incremental costs for the Village are estimated to be approximately \$100 million. This includes funding for temporary facilities in the Village during the Games and the cost to convert the residential units used by the athletes for permanent occupancy after the Games.

Toronto 2015 will work with all partners in the design and construction of the Village to ensure compliance with all Pan American Games Village requirements.

The development of the site where the Pan American Village will be located has begun, with some infrastructure already in place.

CONSTRUCTION SCHEDULE



◇ GAMES PERIOD





PAN AMERICAN VILLAGE SITE - 1999



CONSTRUCTION AT PAN AMERICAN VILLAGE SITE - 2009



PAN AMERICAN VILLAGE - 2015